

A photograph of two male workers in profile, facing left, on an industrial site. They are wearing white hard hats, safety glasses, and earplugs. The worker in the foreground is wearing a blue jacket with reflective yellow stripes and a logo on the sleeve. The worker behind him is wearing a black jacket with a reflective yellow vest. They are standing on a metal walkway with railings. The background shows industrial structures and a clear sky.

ANR Monthly Customer Update

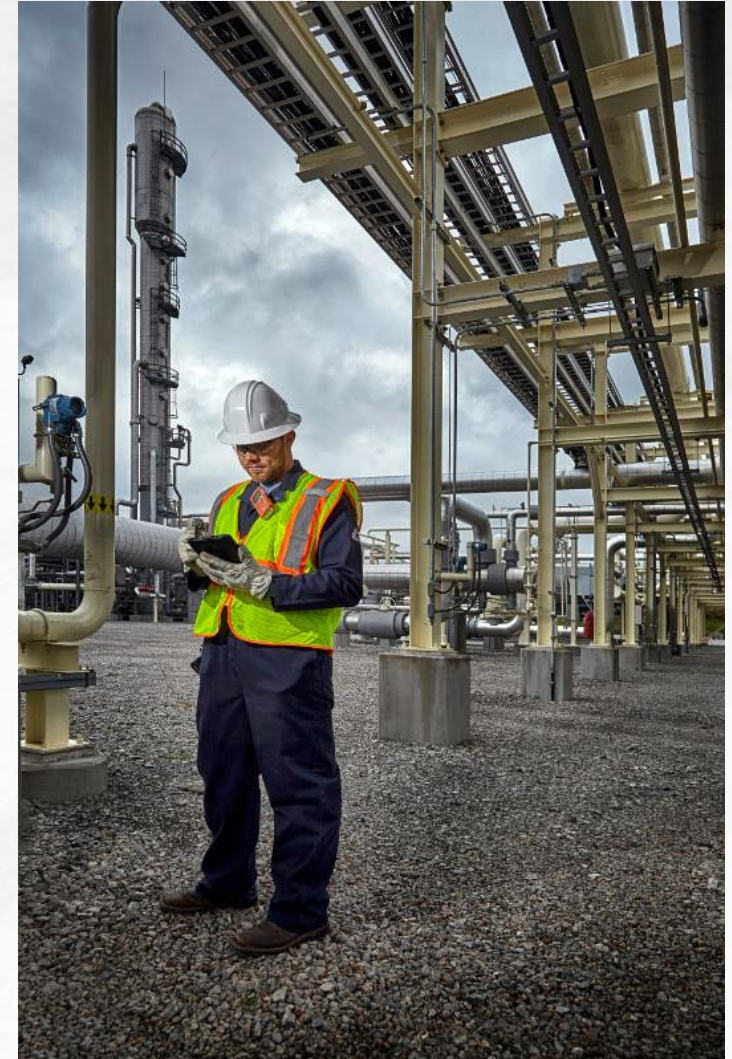
May 2021



TC Energy

Agenda

- 1. Safety moment & TC Energy update**
DeAnna Parsell, Noms & Scheduling
- 2. Storage update**
Jeffery Keck, Operations Planning
- 3. Power Desk update**
Lauren Gindratt, Operations Planning
- 4. Operational update**
Michael Gosselin, Operations Planning
- 5. Noms & Scheduling update**
DeAnna Parsell, Noms & Scheduling
Guest speaker, Nicholas Payne, Business Development





Safety Moment

Dog safety

To avoid a dog attack:

- Do not try to pet unfamiliar dogs
- Even if you know the dog, they could still bite if they don't recognize YOU
- Do not get aggressive when playing with a dog
- Never try to take a bone or other object from the dog if it is growling or showing aggression
- Do not let small children play with dogs unattended

If a strange dog is approaching, you should:

- Stand in place and do not make any sudden movements
- Never run from an approaching dog
- Yell "NO" to attempt to get the dog to back down
- Do not make eye contact or take an aggressive posture towards the dog
- If knocked down, get into a fetal position and cover your head and neck



There are 4.5 million dog bites in the US every year and a dog's mouth can carry over 60 types of bacteria.



“We continue to advance and innovate our cybersecurity strategy to protect our data, systems and assets, and we closely monitor our environments for anything suspicious and regularly plan, practice and prepare for potential scenarios. The attack on Colonial Pipelines demonstrates the reality of the cyber threats we face as an industry. Our SCADA systems are protected and tested rigorously as part of our overall cybersecurity approach. All assets are firewalled from the greater connection of the internet, and that system is tested regularly for penetration points by third-parties.”

Chris Foster

TC Energy Chief Information Officer

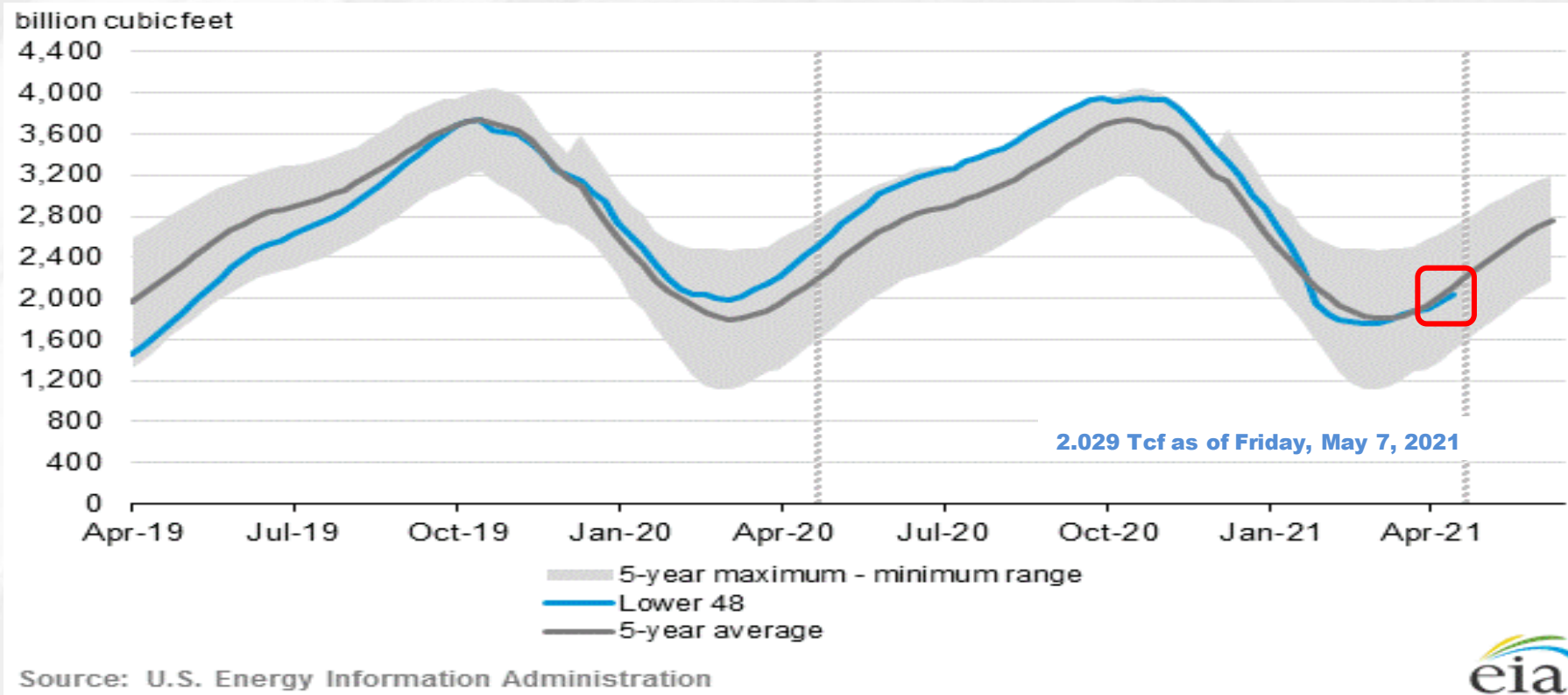


Storage update

Jeffery Keck – Operations Planning

EIA storage position: The big picture

Working gas in underground storage compared with the five-year maximum and minimum



378
bcf

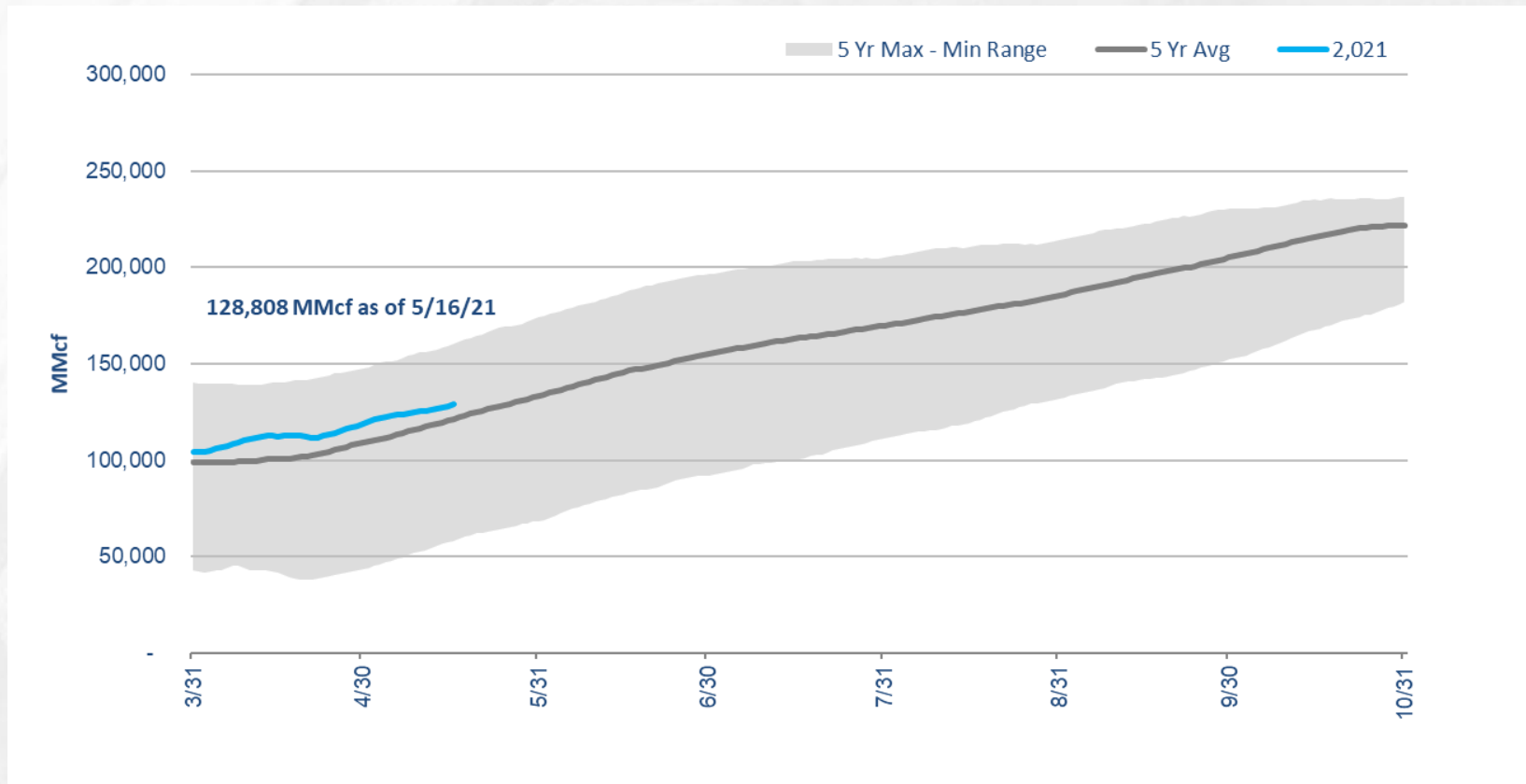
than May 2020

72
bcf

*above the
five-year average*

Storage position

Working gas in underground storage compared with the five-year maximum and minimum



31
bcf

than May 2020

9
bcf

*above the
five-year average*

Storage operations

- From April 18 – May 16, storage activity averaged an injection of 570-MMcf/d. Daily activity varied from an injection of 1,200-MMcf/d to a withdrawal of 520-Bcf/d.
- ANR has met all firm customer demand for storage activity.
- Storage capacity is 51 percent full six weeks into the injection season.
- There are currently no postings restricting storage activity and no planned restrictions on DDS capacity.



Storage operations

- Storage activity is primarily injection, but some withdrawals may still be possible under certain conditions
- There is planned maintenance, but sufficient injection capacity will be maintained to ensure firm injection demand is met
 - If needed, sufficient withdrawal capacity remains available to meet anticipated demand
- The available capacity will continue to be reflected on the EBB under the operationally available capacity

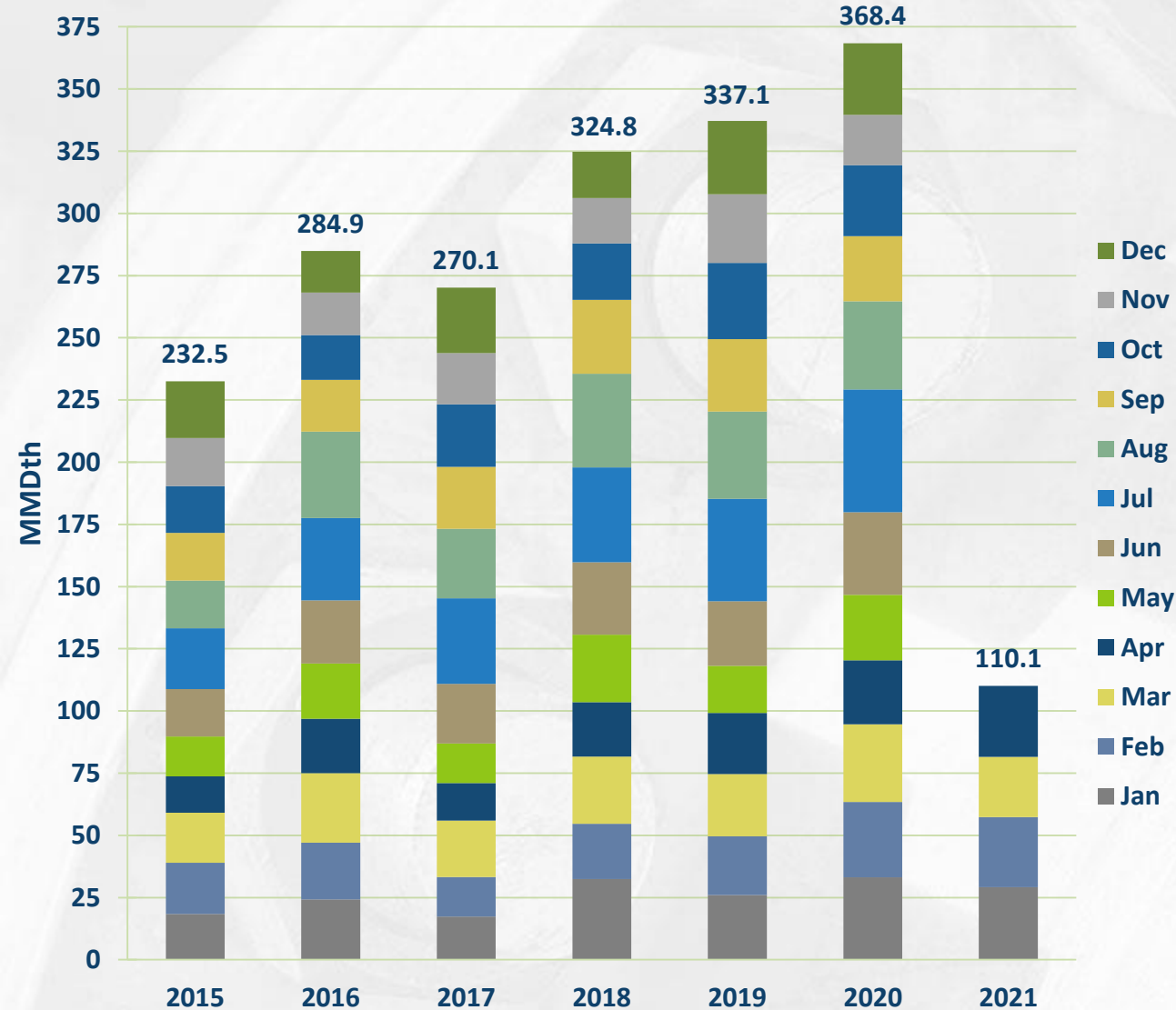


Power Plant update

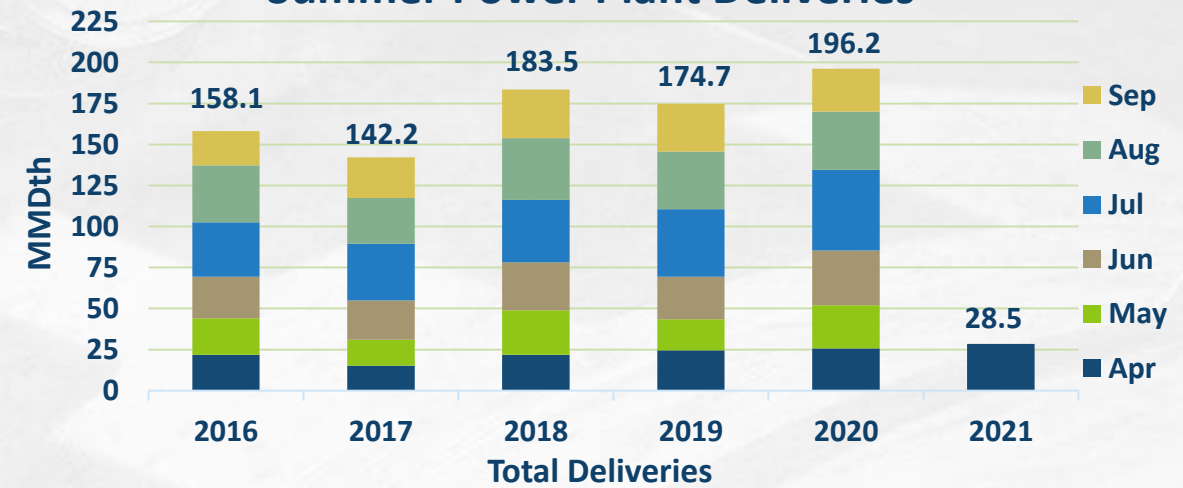
Lauren Gindratt – Operations Planning

Monthly deliveries to Power Plants

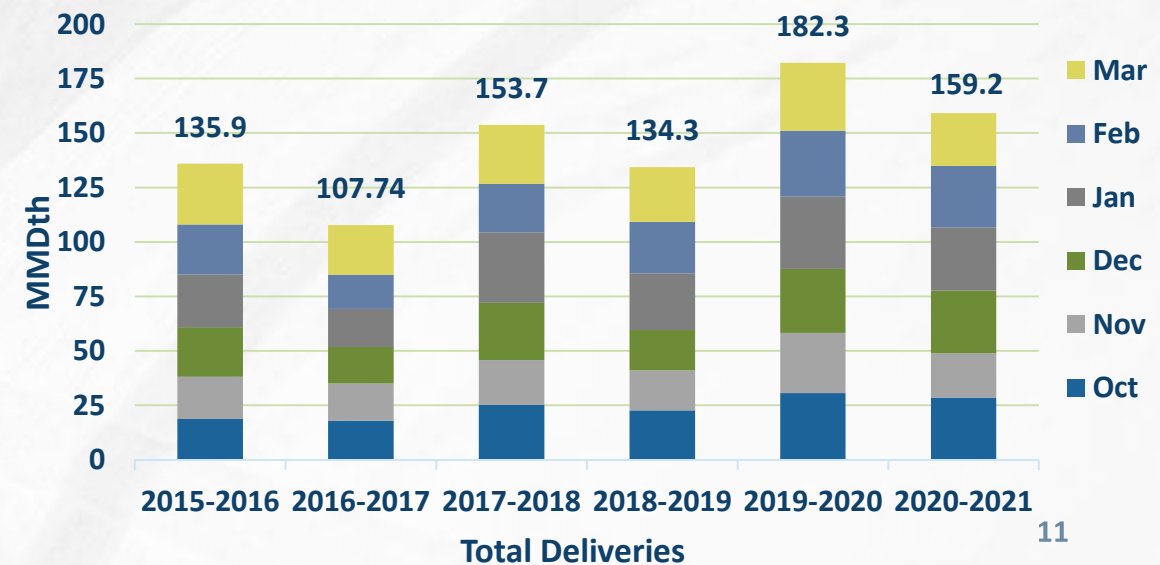
Total Monthly Power Plant Deliveries



Summer Power Plant Deliveries



Winter Power Plant Deliveries



Extreme Condition Situation Notices – Phased philosophy

During peak summer periods, ANR can declare an Extreme Condition Situation when:

- Any portion of ANR's system throughput approaches capacity
- Extreme weather conditions exist
- ANR experiences operating pressures that can be significantly greater or less than normal operations, such that ANR's ability to receive or deliver quantities of gas to meet service obligations is impaired

These phases are generally applied and are subject to change based on operating conditions in order to ensure system integrity.

Extreme Conditions overview: Phase 1 – 3

Phase 1: Post a weather advisory indicating warm weather is forecasted and shippers should align receipts and deliveries daily and hourly to minimize imbalances to support system integrity.

- Guidance for notice is forecast for Chicago and/or Madison & Milwaukee, Wisc., and/or Detroit where high temperatures are more than 78° F for two or more consecutive days or other operational conditions exist.

Phase 2: Post Declaration of Extreme Condition Situation indicating the area(s) of ANR's system that are impacted and lowering the Swing Percentage from 10% to 5%. All receipt and delivery services, excluding ETS and FTS-3 services, to be at a uniform hourly flow rate over a twenty-four (24) hour period. ETS and FTS-3 shippers are required to be at their contractually agreed upon hourly rate. Requests for interruptible and overrun services including ANR's hourly ITS-3 service will be evaluated on a case-by-case basis.

- Guidance for notice is forecast for Chicago and/or Madison & Milwaukee, Wisc., and/or Detroit where average temperatures are more than 84° F for two or more consecutive days or other operational conditions exist.

Phase 3: Issuance of an OFO (Operational Flow Order) may be applied at a *single location*, area, or the whole system.

- Guidance for an OFO notice is System Integrity Requirements or Determination of Unacceptable Shipper(s) behavior.



Operational update

Michael Gosselin – Operations Planning


Capacity impacts (Northern Area)

Dates	Area/Segment/Location	Cap (MMcf/d)		May																															June																														
		Impact	Avail	1	2	3	4	5	6	7	8	9	10	11	12	13	14	15	16	17	18	19	20	21	22	23	24	25	26	27	28	29	30	31	1	2	3	4	5	6	7	8	9	10	11	12	13	14	15	16	17	18	19	20	21	22	23	24	25	26	27	28	29	30	
Market Area & Storage				1	2	3	4	5	6	7	8	9	10	11	12	13	14	15	16	17	18	19	20	21	22	23	24	25	26	27	28	29	30	31	1	2	3	4	5	6	7	8	9	10	11	12	13	14	15	16	17	18	19	20	21	22	23	24	25	26	27	28	29	30	
	Capitol (LOC # 28846)			Yellow bar from day 3 to 25																																																													
5/3 - 5/26	Meter Replacement	N/A	Shut In																																																														
	Milwaukee (LOC # 28842)																																																																
6/1 - 6/26	Meter Replacement	N/A	Shut In	Red bar from day 1 to 26																																																													
	Tiffany (LOC # 261575)																																																																
5/25 - 5/26	Meter Replacement	N/A	Shut In	Green bar on day 25																																																													
	Joliet - NGPL (LOC #2610)																																																																
5/26	Joliet CS - Unit Inspection	N/A	Shut In	Red bar on day 26																																																													
6/15 - 6/16	Joliet CS - Safety System Testing	N/A	Shut In	Red bar on days 15-16																																																													
	Joliet - MGT Receipt (LOC #48641)																																																																
6/15 - 6/16	Joliet CS - Safety System Testing	N/A	Shut In	Green bar on days 15-16																																																													
	Youngs Road Delivery (LOC #523090)																																																																
6/15 - 6/16	Joliet CS - Safety System Testing	N/A	Shut In	Yellow bar on days 15-16																																																													
	St. John Eastbound - (LOC #226633)																																																																
5/18 - 5/22	Pipeline - Integrity Digs	100	1,160	Green bar from day 18 to 22																																																													
6/1 - 6/6	Pipeline - Emerald Crossing Class Change 30"	480	780	Red bar from day 1 to 6																																																													
6/15 - 6/30	Pipeline - Emerald Crossing Class Change 22"	70	1,190	Green bar from day 15 to 30																																																													
	Defiance Westbound - (LOC #505605)																																																																
5/19	LaGrange CS ESD Testing	245	448	Green bar on day 19																																																													

Outage postings

- Service impacts are estimates. Actual nominations, markets, weather and pipeline conditions determine any level of curtailments.
- Projects may be added, altered, delayed or cancelled. Emergent work cannot be planned and will happen from time to time.
- Notice of such planned work, including additions or changes, will be provided via a posting under the Planned Service Outage (PSO) category in GEMS. Emergent work will be posted under the Critical Notice category as soon as possible.

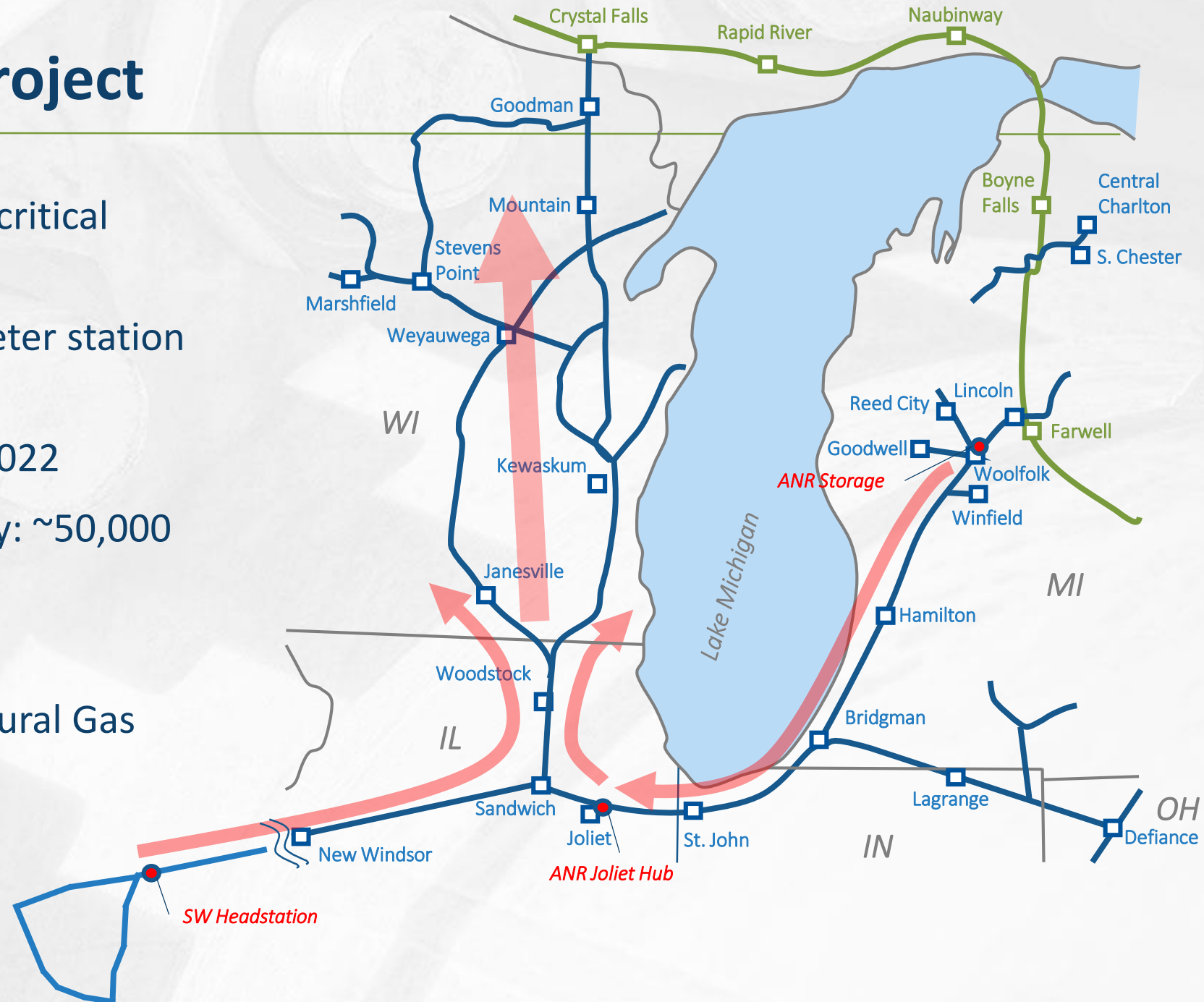




Nominations & Scheduling update
DeAnna Parsell – Noms and Scheduling
Guest speaker, Nicholas Payne – Business Development

Wisconsin Access Project

- Efficient expansion into the critical Wisconsin demand market
- Facilities Scope: Multiple meter station expansions
- Target In-Service Date: Q4 2022
- Incremental Project Capacity: ~50,000 Dth
- (6) Project Shippers
- Demonstrated Need for Natural Gas



ANR customer assistance

For customer assistance concerning scheduling priorities, firm service rights and features, GEMS new user training, virtual and face-to-face meetings, etc., please contact the ANR Noms & Scheduling Team:

Toll Free: 1-800-827-5267

Group Email: ANR_Noms_Scheduling@tcenergy.com

Web address for the ANRPL Tariff: ebb.anrpl.com

Questions



US\$ 0.8	0.2	
US\$ 0.7	0.3	
US\$ 0.6	0.4	
US\$ 0.5	0.5	
US\$ 0.4	0.6	
US\$ 0.3	0.7	
US\$ 0.2	0.8	
US\$ 0.1	0.9	
US\$ 0.0	1.0	
Total Expenditure Equivalent		10.2